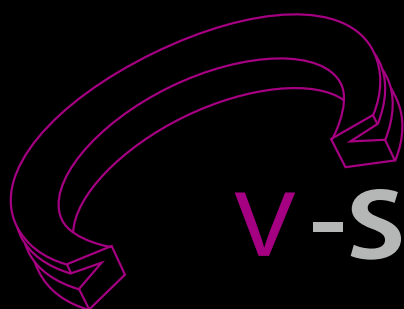


GERBER ROPER



V-SEAL

GMORS OFFER EDI SERVICES

Electronic Data Interchange

In November 2019, GMORS established a B2B Electronic Data Interchange (EDI) platform in support of customer electronic data exchange. This will save transaction processing time for both parties and enable exchange process verification and data security.

We welcome customers who are interested in our EDI services to contact our customer support representatives.



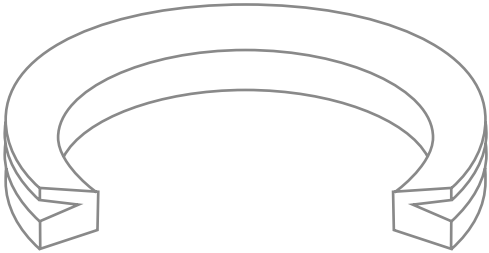


TABLE OF CONTENTS

02	About GMORS
04	VA Standard Size
08	VL Standard Size
09	VS Standard Size

About GMORS

GMORS- SEALS TO YOUR HEART !

GMORS Rubber- A company moving forward with continuous improvements. Servicing in Rubber industry for all kinds of application to fulfill a better world.

Welcome to GMORS Rubber!

Since 1986, GMORS has served as the leading rubber component manufacturer in Taiwan. Known for innovation and continuous improvements, GMORS products have been approved for industries of Automotive, Semi-conductor, Medical, Aerospace, Drinking Water, Food & Drug equipment, Sanitary and various industrial grades.

Marching into the 21th century, GMORS Rubber's commitment is to satisfy all industries with the optimum combination of competitive price, high quality and fast service. Our goal is to be your best global partner on rubber components.



Product Offerings

- O-Rings
- X-Rings
- Back-Up Rings
- U-Packings
- V-Seals
- Special Packing Series
- Wear Rings
- Bonded Seals
- Valve Seals
- Wiper Seals
- Hydraulic Seals
- Pneumatic Seals



Approved

Manufacturing Process System

- ⦿ AS9100D (Aerospace industry approved)
- ⦿ IATF 16949:2016
- ⦿ ISO 9001:2015
- ⦿ ISO 13485:2016 (medical industry non-implantable approved)
- ⦿ ISO 14001:2015
- ⦿ ISO 45001:2018
- ⦿ ISO 14064-1:2018
- ⦿ TAF Approved In-House Lab with Integrated Equipment



Material Certification

- | | |
|---|---|
| ⦿ NSF 61 (USA Drinking Water) | ⦿ UL 1238 (Flammable Liquid Dispensing Devices) |
| ⦿ NSF 42 (USA Drinking Water) | ⦿ API 6A (H2S Sour Gas Resistance) |
| ⦿ WRAS (UK Drinking Water) | ⦿ DIN EN 549 (Pipes, Gas Appliances) |
| ⦿ ACS (France Drinking Water) | ⦿ NORSOK M-710 (ISO 23936) (RGD Material Certified) |
| ⦿ W-270 (Germany Drinking Water) | ⦿ NACE TM0297(RGD Material Certified) |
| ⦿ KTW (Germany Drinking Water) | ⦿ Total EP PVV 142 (Rapid Gas Decompression) |
| ⦿ AS/NZS 4020 (Australian Drinking Water) | ⦿ ROHS 3 EU Directive 2015/863/EU |
| ⦿ USP VI (USA Biological Reactivity Test) | ⦿ REACH SVHC |
| ⦿ UL 157 (Automotive, Gasoline) | ⦿ ADI FREE |
-
- | | | |
|--------------------|-------------------------|--------------------|
| ⦿ General Industry | ⦿ Food | ⦿ Renewable Energy |
| ⦿ Automotive | ⦿ Hydraulic & Pneumatic | ⦿ Medical |
| ⦿ Semi-conductor | ⦿ Aerospace | ⦿ Agriculture |
| ⦿ Drinking Water | ⦿ Oil & Gas | |

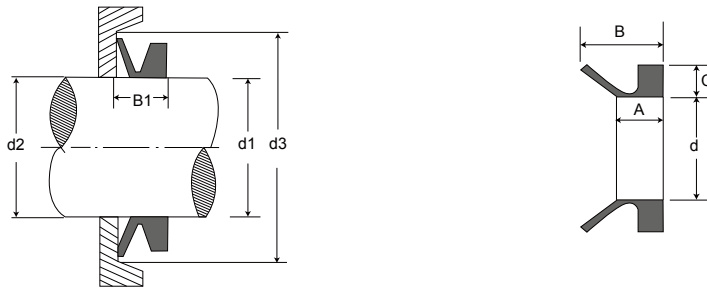


V-Seal Standard Size

The V-Seal is an all-rubber seal that mounts directly on the shaft and seals axially against counterface, housing, seal case or similar surface. The long flexible lip is designed to act like a mechanical face seal. It can retain lubricants and exclude contaminants. V-Seal can be used as a primary seal or as a secondary back-up seal.



It performs well in dry applications and is capable of handling a greater amount of eccentricity and misalignment than most radial lip type seals.



VA Standard Size-MEASUREMENTS IN MILLIMETERS

SIZE NUMBERS	d1	d	c	A	B	d2	d3	B1
VA-003	2.7 - 3.5	2.5	1.5	2.0	3.0	d1+1	d1+4	2.5 ± 0.3
VA-004	3.5 - 4.5	3.2	2.0	2.4	3.7	d1+1	d1+6	3.0 ± 0.4
VA-005	4.5 - 5.5	4.0	2.0	2.4	3.7	d1+1	d1+6	3.0 ± 0.4
VA-006	5.5 - 6.5	5.0	2.0	2.4	3.7	d1+1	d1+6	3.0 ± 0.4
VA-007	6.5 - 8.0	6.0	2.0	2.4	3.7	d1+1	d1+6	3.0 ± 0.4
VA-008	8.0 - 9.5	7.0	2.0	2.4	3.7	d1+1	d1+6	3.0 ± 0.4
VA-010	9.5 - 11.5	9.0	3.0	3.4	5.5	d1+2	d1+9	4.5 ± 0.6
VA-0012	11.5 - 13.5	10.5	3.0	3.4	5.5	d1+2	d1+9	4.5 ± 0.6
VA-0013	13.5 - 15.5	11.7	3.0	3.4	5.5	d1+2	d1+9	4.5 ± 0.6
VA-0014	15.5 - 17.5	12.5	3.0	3.4	5.5	d1+2	d1+9	4.5 ± 0.6
VA-0016	15.5 - 17.5	14.0	3.0	3.4	5.5	d1+2	d1+9	4.5 ± 0.6
VA-0018	17.5 - 19.0	16.0	3.0	3.4	5.5	d1+2	d1+9	4.5 ± 0.6
VA-0020	19.0 - 21.0	18.0	4.0	4.7	7.5	d1+2	d1+12	6.0 ± 0.8
VA-0022	21.0 - 24.0	20.0	4.0	4.7	7.5	d1+2	d1+12	6.0 ± 0.8
VA-0025	24.0 - 27.0	22.0	4.0	4.7	7.5	d1+2	d1+12	6.0 ± 0.8
VA-0028	27.0 - 29.0	25.0	4.0	4.7	7.5	d1+3	d1+12	6.0 ± 0.8
VA-0030	29.0 - 31.0	27.0	4.0	4.7	7.5	d1+3	d1+12	6.0 ± 0.8
VA-0032	31.0 - 33.0	29.0	4.0	4.7	7.5	d1+3	d1+12	6.0 ± 0.8
VA-0035	33.0 - 36.0	31.0	4.0	4.7	7.5	d1+3	d1+12	6.0 ± 0.8
VA-0038	36.0 - 38.0	34.0	4.0	4.7	7.5	d1+3	d1+12	6.0 ± 0.8
VA-0040	38.0 - 43.0	36.0	5.0	5.5	9.0	d1+3	d1+15	7.0 ± 1.0
VA-0045	43.0 - 48.0	40.0	5.0	5.5	9.0	d1+3	d1+15	7.0 ± 1.0
VA-0050	48.0 - 53.0	45.0	5.0	5.5	9.0	d1+3	d1+15	7.0 ± 1.0
VA-0055	53.0 - 58.0	49.0	5.0	5.5	9.0	d1+3	d1+15	7.0 ± 1.0
VA-0060	58.0 - 63.0	54.0	5.0	5.5	9.0	d1+3	d1+15	7.0 ± 1.0
VA-0065	63.0 - 68.0	58.0	5.0	5.5	9.0	d1+3	d1+15	7.0 ± 1.0
VA-0070	68.0 - 73.0	63.0	6.0	6.8	11.0	d1+4	d1+18	9.0 ± 1.2
VA-0075	73.0 - 78.0	67.0	6.0	6.0	6.8	d1+4	d1+18	9.0 ± 1.2
VA-0080	78.0 - 83.0	72.0	6.0	6.8	11.0	d1+4	d1+18	9.0 ± 1.2
VA-0085	83.0 - 88.0	76.0	6.0	6.8	11.0	d1+4	d1+18	9.0 ± 1.2
VA-0090	88.0 - 93.0	81.0	6.0	6.8	11.0	d1+4	d1+18	9.0 ± 1.2
VA-0095	93.0 - 98.0	85.0	6.0	6.8	11.0	d1+4	d1+18	9.0 ± 1.2
VA-0100	98.0 - 105.0	90.0	6.0	6.8	11.0	d1+4	d1+18	9.0 ± 1.2
VA-0110	105.0 - 115.0	99.0	7.0	7.9	12.8	d1+4	d1+21	10.5 ± 1.5
VA-0120	115.0 - 125.0	108.0	7.0	7.9	12.8	d1+4	d1+21	10.5 ± 1.5
VA-0130	125.0 - 135.0	117.0	7.0	7.9	12.8	d1+4	d1+21	10.5 ± 1.5
VA-0140	135.0 - 145.0	126.0	7.0	7.9	12.8	d1+4	d1+21	10.5 ± 1.5
VA-0150	145.0 - 155.0	135.0	7.0	7.9	12.8	d1+4	d1+21	10.5 ± 1.5
VA-0160	155.0 - 165.0	144.0	8.0	9.0	14.5	d1+5	d1+24	12.0 ± 1.8
VA-0170	165.0 - 175.0	153.0	8.0	9.0	14.5	d1+5	d1+24	12.0 ± 1.8

VA Standard Size-MEASUREMENTS IN MILLIMETERS

SIZE NUMBERS	d1	d	c	A	B	d2	d3	B1
VA-0180	175.0 - 185.0	162.0	8.0	9.0	14.5	d1+5	d1+24	12.0 ± 1.8
VA-0190	185.0 - 195.0	171.0	8.0	9.0	14.5	d1+5	d1+24	12.0 ± 1.8
VA-0199	195.0 - 210.0	180.0	8.0	9.0	14.5	d1+5	d1+24	12.0 ± 1.8
VA-0200	190.0 - 210.0	180.0	15.0	14.0	25.0	d1+10	d1+45	20.0 ± 4.0
VA-0220	210.0 - 235.0	198.0	15.0	14.0	25.0	d1+10	d1+45	20.0 ± 4.0
VA-0250	235.0 - 265.0	225.0	15.0	14.0	25.0	d1+10	d1+45	20.0 ± 4.0
VA-0275	265.0 - 290.0	247.0	15.0	14.0	25.0	d1+10	d1+45	20.0 ± 4.0
VA-0300	290.0 - 310.0	270.0	15.0	14.0	25.0	d1+10	d1+45	20.0 ± 4.0
VA-0325	310.0 - 335.0	292.0	15.0	14.0	25.0	d1+10	d1+45	20.0 ± 4.0
VA-0350	335.0 - 365.0	315.0	15.0	14.0	25.0	d1+10	d1+45	20.0 ± 4.0
VA-0375	365.0 - 390.0	337.0	15.0	14.0	25.0	d1+10	d1+45	20.0 ± 4.0
VA-0400	390.0 - 430.0	360.0	15.0	14.0	25.0	d1+10	d1+45	20.0 ± 4.0
VA-0450	430.0 - 480.0	405.0	15.0	14.0	25.0	d1+10	d1+45	20.0 ± 4.0
VA-0500	480.0 - 530.0	450.0	15.0	14.0	25.0	d1+10	d1+45	20.0 ± 4.0
VA-0550	530.0 - 580.0	495.0	15.0	14.0	25.0	d1+10	d1+45	20.0 ± 4.0
VA-0600	580.0 - 630.0	540.0	15.0	14.0	25.0	d1+10	d1+45	20.0 ± 4.0
VA-0650	630.0 - 665.0	600.0	15.0	14.0	25.0	d1+10	d1+45	20.0 ± 4.0
VA-0700	665.0 - 705.0	630.0	15.0	14.0	25.0	d1+10	d1+45	20.0 ± 4.0
VA-0725	705.0 - 745.0	670.0	15.0	14.0	25.0	d1+10	d1+45	20.0 ± 4.0
VA-0750	745.0 - 785.0	705.0	15.0	14.0	25.0	d1+10	d1+45	20.0 ± 4.0
VA-0800	785.0 - 830.0	745.0	15.0	14.0	25.0	d1+10	d1+45	20.0 ± 4.0
VA-0850	830.0 - 875.0	785.0	15.0	14.0	25.0	d1+10	d1+45	20.0 ± 4.0
VA-0900	875.0 - 920.0	825.0	15.0	14.0	25.0	d1+10	d1+45	20.0 ± 4.0
VA-0950	920.0 - 965.0	865.0	15.0	14.0	25.0	d1+10	d1+45	20.0 ± 4.0
VA-1000	965.0 - 1015.0	910.0	15.0	14.0	25.0	d1+10	d1+45	20.0 ± 4.0
VA-1050	1015.0 - 1065.0	955.0	15.0	14.0	25.0	d1+10	d1+45	20.0 ± 4.0
VA-1100	1065.0 - 1115.0	1000.0	15.0	14.0	25.0	d1+10	d1+45	20.0 ± 4.0
VA-1150	1115.0 - 1165.0	1045.0	15.0	14.0	25.0	d1+10	d1+45	20.0 ± 4.0
VA-1200	1165.0 - 1215.0	1090.0	15.0	14.0	25.0	d1+10	d1+45	20.0 ± 4.0
VA-1250	1215.0 - 1270.0	1135.0	15.0	14.0	25.0	d1+10	d1+45	20.0 ± 4.0
VA-1300	1270.0 - 1320.0	1180.0	15.0	14.0	25.0	d1+10	d1+45	20.0 ± 4.0
VA-1350	1320.0 - 1370.0	1225.0	15.0	14.0	25.0	d1+10	d1+45	20.0 ± 4.0
VA-1400	1370.0 - 1420.0	1270.0	15.0	14.0	25.0	d1+10	d1+45	20.0 ± 4.0
VA-1450	1420.0 - 1470.0	1315.0	15.0	14.0	25.0	d1+10	d1+45	20.0 ± 4.0
VA-1500	1470.0 - 1520.0	1360.0	15.0	14.0	25.0	d1+10	d1+45	20.0 ± 4.0
VA-1550	1520.0 - 1570.0	1405.0	15.0	14.0	25.0	d1+10	d1+45	20.0 ± 4.0
VA-1600	1570.0 - 1620.0	1450.0	15.0	14.0	25.0	d1+10	d1+45	20.0 ± 4.0
VA-1650	1620.0 - 1670.0	1495.0	15.0	14.0	25.0	d1+10	d1+45	20.0 ± 4.0
VA-1670	1670.0 - 1720.0	1540.0	15.0	14.0	25.0	d1+10	d1+45	20.0 ± 4.0
VA-1750	1720.0 - 1770.0	1585.0	15.0	14.0	25.0	d1+10	d1+45	20.0 ± 4.0
VA-1800	1770.0 - 1820.0	1630.0	15.0	14.0	25.0	d1+10	d1+45	20.0 ± 4.0
VA-1850	1820.0 - 1870.0	1675.0	15.0	14.0	25.0	d1+10	d1+45	20.0 ± 4.0
VA-1900	1870.0 - 1920.0	1720.0	15.0	14.0	25.0	d1+10	d1+45	20.0 ± 4.0
VA-1950	1920.0 - 1970.0	1765.0	15.0	14.0	25.0	d1+10	d1+45	20.0 ± 4.0
VA-2000	1970.0 - 2020.0	1810.0	15.0	14.0	25.0	d1+10	d1+45	20.0 ± 4.0

V-Seal Standard Size

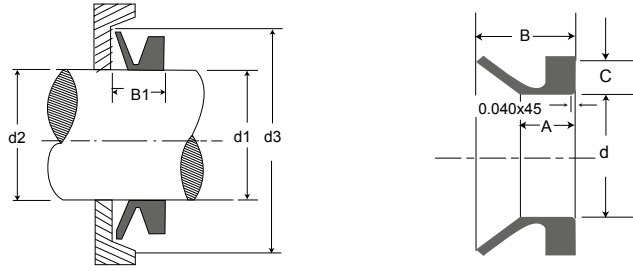
VA Standard Size-MEASUREMENTS IN INCH

SIZE NUMBERS	d1	d	c	A	B	d2	d3	B1
VA-003	0.106-0.138	0.098	0.059	0.079	0.118	d1+0.039	d1+0.157	0.098±0.012
VA-004	0.138-0.177	0.126	0.079	0.094	0.146	d1+0.039	d1+0.236	0.118±0.016
VA-005	0.177-0.217	0.157	0.079	0.094	0.146	d1+0.039	d1+0.236	0.118±0.016
VA-006	0.217-0.256	0.197	0.079	0.094	0.146	d1+0.039	d1+0.236	0.118±0.016
VA-007	0.256-0.315	0.236	0.079	0.094	0.146	d1+0.039	d1+0.236	0.118±0.016
VA-008	0.315-0.374	0.276	0.079	0.094	0.146	d1+0.039	d1+0.236	0.118±0.016
VA-010	0.374-0.453	0.354	0.118	0.134	0.217	d1+0.079	d1+0.354	0.177±0.024
VA-0012	0.453-0.531	0.413	0.118	0.134	0.217	d1+0.079	d1+0.354	0.177±0.024
VA-0013	0.531-0.610	0.461	0.118	0.134	0.217	d1+0.079	d1+0.354	0.177±0.024
VA-0014	0.610-0.689	0.492	0.118	0.134	0.217	d1+0.079	d1+0.354	0.177±0.024
VA-0016	0.610-0.689	0.551	0.118	0.134	0.217	d1+0.079	d1+0.354	0.177±0.024
VA-0018	0.689-0.748	0.630	0.118	0.134	0.217	d1+0.079	d1+0.354	0.177±0.024
VA-0020	0.748-0.827	0.709	0.157	0.185	0.295	d1+0.079	d1+0.472	0.236±0.031
VA-0022	0.827-0.945	0.787	0.157	0.185	0.295	d1+0.079	d1+0.472	0.236±0.031
VA-0025	0.945-1.063	0.866	0.157	0.185	0.295	d1+0.079	d1+0.472	0.236±0.031
VA-0028	1.063-1.142	0.984	0.157	0.185	0.295	d1+0.118	d1+0.472	0.236±0.031
VA-0030	1.142-1.220	1.063	0.157	0.185	0.295	d1+0.118	d1+0.472	0.236±0.031
VA-0032	1.220-1.299	1.142	0.157	0.185	0.295	d1+0.118	d1+0.472	0.236±0.031
VA-0035	1.299-1.417	1.220	0.157	0.185	0.295	d1+0.118	d1+0.472	0.236±0.031
VA-0038	1.417-1.496	1.339	0.157	0.185	0.295	d1+0.118	d1+0.472	0.236±0.031
VA-0040	1.496-1.693	1.417	0.217	0.217	0.354	d1+0.118	d1+0.591	0.276±0.039
VA-0045	1.693-1.890	1.575	0.197	0.217	0.354	d1+0.118	d1+0.591	0.276±0.039
VA-0050	1.890-2.087	1.772	0.197	0.217	0.354	d1+0.118	d1+0.591	0.276±0.039
VA-0055	2.087-2.283	1.929	0.197	0.217	0.354	d1+0.118	d1+0.591	0.276±0.039
VA-0060	2.283-2.480	2.126	0.197	0.217	0.354	d1+0.118	d1+0.591	0.276±0.039
VA-0065	2.480-2.677	2.283	0.197	0.217	0.354	d1+0.118	d1+0.591	0.276±0.039
VA-0070	2.677-2.874	2.480	0.236	0.268	0.433	d1+0.157	d1+0.709	0.354±0.047
VA-0075	2.874-3.071	2.638	0.236	0.268	0.433	d1+0.157	d1+0.709	0.354±0.047
VA-0080	3.071-3.268	2.835	0.236	0.268	0.433	d1+0.157	d1+0.709	0.354±0.047
VA-0085	3.268-3.465	2.992	0.236	0.268	0.433	d1+0.157	d1+0.709	0.354±0.047
VA-0090	3.465-3.661	3.189	0.236	0.268	0.433	d1+0.157	d1+0.709	0.354±0.047
VA-0095	3.661-3.858	3.346	0.236	0.268	0.433	d1+0.157	d1+0.709	0.354±0.047
VA-0100	3.858-4.134	3.543	0.236	0.268	0.433	d1+0.157	d1+0.709	0.354±0.047
VA-0110	4.134-4.528	3.898	0.276	0.311	0.504	d1+0.157	d1+0.827	0.413±0.059
VA-0120	4.528-4.921	4.252	0.276	0.311	0.504	d1+0.157	d1+0.827	0.413±0.059
VA-0130	4.921-5.315	4.606	0.276	0.311	0.504	d1+0.157	d1+0.827	0.413±0.059
VA-0140	5.315-5.709	4.961	0.276	0.311	0.504	d1+0.157	d1+0.827	0.413±0.059
VA-0150	5.709-6.102	5.315	0.276	0.311	0.504	d1+0.157	d1+0.827	0.413±0.059
VA-0160	6.102-6.496	5.669	0.315	0.354	0.571	d1+0.197	d1+0.945	0.472±0.071
VA-0170	6.496-6.890	6.024	0.315	0.354	0.571	d1+0.197	d1+0.945	0.472±0.071
VA-0180	6.890-7.283	6.378	0.315	0.354	0.571	d1+0.197	d1+0.945	0.472±0.071
VA-0190	7.283-7.677	6.732	0.315	0.354	0.571	d1+0.197	d1+0.945	0.472±0.071
VA-0199	7.677-8.268	7.087	0.315	0.354	0.571	d1+0.197	d1+0.945	0.472±0.071
VA-0200	7.480-8.268	7.087	0.591	0.551	0.984	d1+0.394	d1+1.772	0.787±0.157
VA-0220	8.268-9.252	7.795	0.591	0.551	0.984	d1+0.394	d1+1.772	0.787±0.157
VA-0250	9.252-10.433	8.858	0.591	0.551	0.984	d1+0.394	d1+1.772	0.787±0.157
VA-0275	10.433-11.417	9.724	0.591	0.551	0.984	d1+0.394	d1+1.772	0.787±0.157
VA-0300	11.417-12.205	10.630	0.591	0.551	0.984	d1+0.394	d1+1.772	0.787±0.157
VA-0325	12.205-13.189	11.496	0.591	0.551	0.984	d1+0.394	d1+1.772	0.787±0.157
VA-0350	13.189-14.370	12.402	0.591	0.551	0.984	d1+0.394	d1+1.772	0.787±0.157
VA-0375	14.370-15.354	13.268	0.591	0.551	0.984	d1+0.394	d1+1.772	0.787±0.157
VA-0400	15.354-16.929	14.173	0.591	0.551	0.984	d1+0.394	d1+1.772	0.787±0.157
VA-0450	16.929-18.898	15.945	0.591	0.551	0.984	d1+0.394	d1+1.772	0.787±0.157
VA-0500	18.898-20.866	17.717	0.591	0.551	0.984	d1+0.394	d1+1.772	0.787±0.157
VA-0550	20.866-22.835	19.488	0.591	0.551	0.984	d1+0.394	d1+1.772	0.787±0.157
VA-0600	22.835-24.803	21.260	0.591	0.551	0.984	d1+0.394	d1+1.772	0.787±0.157
VA-0650	24.803-26.181	23.622	0.591	0.551	0.984	d1+0.394	d1+1.772	0.787±0.157
VA-0700	26.181-27.756	24.803	0.591	0.551	0.984	d1+0.394	d1+1.772	0.787±0.157
VA-0725	27.756-29.331	26.378	0.591	0.551	0.984	d1+0.394	d1+1.772	0.787±0.157
VA-0750	29.331-30.905	27.756	0.591	0.551	0.984	d1+0.394	d1+1.772	0.787±0.157

VA Standard Size-MEASUREMENTS IN INCH

SIZE NUMBERS	d1	d	c	A	B	d2	d3	B1
VA-0800	30.905-32.677	29.331	0.591	0.551	0.984	d1+0.394	d1+1.772	0.787±0.157
VA-0850	32.677-34.449	30.905	0.591	0.551	0.984	d1+0.394	d1+1.772	0.787±0.157
VA-0900	34.449-36.220	32.480	0.591	0.551	0.984	d1+0.394	d1+1.772	0.787±0.157
VA-0950	36.220-37.992	34.055	0.591	0.551	0.984	d1+0.394	d1+1.772	0.787±0.157
VA-1000	37.992-39.961	35.827	0.591	0.551	0.984	d1+0.394	d1+1.772	0.787±0.157
VA-1050	39.961-41.929	37.598	0.591	0.551	0.984	d1+0.394	d1+1.772	0.787±0.157
VA-1100	41.929-43.898	39.370	0.591	0.551	0.984	d1+0.394	d1+1.772	0.787±0.157
VA-1150	43.898-45.866	41.142	0.591	0.551	0.984	d1+0.394	d1+1.772	0.787±0.157
VA-1200	45.866-47.835	42.913	0.591	0.551	0.984	d1+0.394	d1+1.772	0.787±0.157
VA-1250	47.835-50.000	44.685	0.591	0.551	0.984	d1+0.394	d1+1.772	0.787±0.157
VA-1300	50.000-51.968	46.457	0.591	0.551	0.984	d1+0.394	d1+1.772	0.787±0.157
VA-1350	51.968-53.937	48.228	0.591	0.551	0.984	d1+0.394	d1+1.772	0.787±0.157
VA-1400	53.937-55.905	50.000	0.591	0.551	0.984	d1+0.394	d1+1.772	0.787±0.157
VA-1450	55.905-57.874	51.772	0.591	0.551	0.984	d1+0.394	d1+1.772	0.787±0.157
VA-1500	57.874-59.842	53.543	0.591	0.551	0.984	d1+0.394	d1+1.772	0.787±0.157
VA-1550	59.842-61.811	55.315	0.591	0.551	0.984	d1+0.394	d1+1.772	0.787±0.157
VA-1600	61.811-63.779	57.087	0.591	0.551	0.984	d1+0.394	d1+1.772	0.787±0.157
VA-1650	63.779-65.748	58.858	0.591	0.551	0.984	d1+0.394	d1+1.772	0.787±0.157
VA-1670	65.748-67.716	60.630	0.591	0.551	0.984	d1+0.394	d1+1.772	0.787±0.157
VA-1750	67.716-69.685	62.401	0.591	0.551	0.984	d1+0.394	d1+1.772	0.787±0.157
VA-1800	69.685-71.653	64.173	0.591	0.551	0.984	d1+0.394	d1+1.772	0.787±0.157
VA-1850	71.653-73.622	65.945	0.591	0.551	0.984	d1+0.394	d1+1.772	0.787±0.157
VA-1900	73.622-75.590	67.716	0.591	0.551	0.984	d1+0.394	d1+1.772	0.787±0.157
VA-1950	75.590-77.559	69.488	0.591	0.551	0.984	d1+0.394	d1+1.772	0.787±0.157
VA-2000	77.559-79.527	71.260	0.591	0.551	0.984	d1+0.394	d1+1.772	0.787±0.157

V-Seal Standard Size

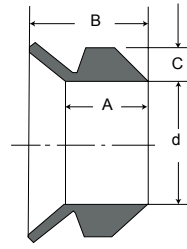
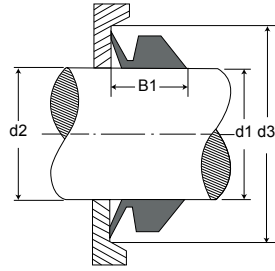


VL Standard Size-MEASUREMENTS IN MILLIMETERS

SIZE NUMBERS	d1	d	c	A	B	d2	d3	B1
VL-110	105.0 - 115.0	99.0	6.5	6.0	10.5	C+5	C+20	8.0 ± 1.5
VL-120	115.0 - 125.0	108.0	6.5	6.0	10.5	C+5	C+20	8.0 ± 1.5
VL-130	125.0 - 135.0	117.0	6.5	6.0	10.5	C+5	C+20	8.0 ± 1.5
VL-140	135.0 - 145.0	126.0	6.5	6.0	10.5	C+5	C+20	8.0 ± 1.5
VL-150	145.0 - 155.0	135.0	6.5	6.0	10.5	C+5	C+20	8.0 ± 1.5
VL-160	155.0 - 165.0	144.0	6.5	6.0	10.5	C+5	C+20	8.0 ± 1.5
VL-170	165.0 - 175.0	153.0	6.5	6.0	10.5	C+5	C+20	8.0 ± 1.5
VL-180	175.0 - 185.0	162.0	6.5	6.0	10.5	C+5	C+20	8.0 ± 1.5
VL-190	185.0 - 195.0	171.0	6.5	6.0	10.5	C+5	C+20	8.0 ± 1.5
VL-200	195.0 - 210.0	182.0	6.5	6.0	10.5	C+5	C+20	8.0 ± 1.5
VL-220	210.0 - 233.0	198.0	6.5	6.0	10.5	C+5	C+20	8.0 ± 1.5
VL-250	233.0 - 260.0	225.0	6.5	6.0	10.5	C+5	C+20	8.0 ± 1.5
VL-275	260.0 - 285.0	247.0	6.5	6.0	10.5	C+5	C+20	8.0 ± 1.5
VL-300	285.0 - 310.0	270.0	6.5	6.0	10.5	C+5	C+20	8.0 ± 1.5
VL-325	310.0 - 335.0	292.0	6.5	6.0	10.5	C+5	C+20	8.0 ± 1.5
VL-350	335.0 - 365.0	315.0	6.5	6.0	10.5	C+5	C+20	8.0 ± 1.5
VL-375	365.0 - 385.0	337.0	6.5	6.0	10.5	C+5	C+20	8.0 ± 1.5
VL-400	385.0 - 410.0	360.0	6.5	6.0	10.5	C+5	C+20	8.0 ± 1.5
VL-425	410.0 - 440.0	382.0	6.5	6.0	10.5	C+5	C+20	8.0 ± 1.5
VL-450	440.0 - 480.0	405.0	6.5	6.0	10.5	C+5	C+20	8.0 ± 1.5
VL-500	480.0 - 530.0	450.0	6.5	6.0	10.5	C+5	C+20	8.0 ± 1.5
VL-525	510.0 - 540.0	472.0	6.5	6.0	10.5	C+5	C+20	8.0 ± 1.5
VL-550	530.0 - 580.0	495.0	6.5	6.0	10.5	C+5	C+20	8.0 ± 1.5
VL-600	580.0 - 630.0	540.0	6.5	6.0	10.5	C+5	C+20	8.0 ± 1.5

VL Standard Size-MEASUREMENTS IN INCH

SIZE NUMBERS	d1	d	c	A	B	d2	d3	B1
VL-110	4.134-4.528	3.898	0.256	0.236	0.413	C+0.197	C+0.787	0.315±0.059
VL-120	4.528-4.921	4.252	0.256	0.236	0.413	C+0.197	C+0.787	0.315±0.059
VL-130	4.921-5.315	4.606	0.256	0.236	0.413	C+0.197	C+0.787	0.315±0.059
VL-140	5.315-5.709	4.961	0.256	0.236	0.413	C+0.197	C+0.787	0.315±0.059
VL-150	5.709-6.102	5.315	0.256	0.236	0.413	C+0.197	C+0.787	0.315±0.059
VL-160	6.102-6.496	5.669	0.256	0.236	0.413	C+0.197	C+0.787	0.315±0.059
VL-170	6.496-6.890	6.024	0.256	0.236	0.413	C+0.197	C+0.787	0.315±0.059
VL-180	6.890-7.283	6.378	0.256	0.236	0.413	C+0.197	C+0.787	0.315±0.059
VL-190	7.283-7.677	6.732	0.256	0.236	0.413	C+0.197	C+0.787	0.315±0.059
VL-200	7.677-8.268	7.165	0.256	0.236	0.413	C+0.197	C+0.787	0.315±0.059
VL-220	8.268-9.173	7.795	0.256	0.236	0.413	C+0.197	C+0.787	0.315±0.059
VL-250	9.173-10.236	8.858	0.256	0.236	0.413	C+0.197	C+0.787	0.315±0.059
VL-275	10.236-11.220	9.724	0.256	0.236	0.413	C+0.197	C+0.787	0.315±0.059
VL-300	11.220-12.205	10.630	0.256	0.236	0.413	C+0.197	C+0.787	0.315±0.059
VL-325	12.205-13.189	11.496	0.256	0.236	0.413	C+0.197	C+0.787	0.315±0.059
VL-350	13.189-14.370	12.402	0.256	0.236	0.413	C+0.197	C+0.787	0.315±0.059
VL-375	14.370-15.157	13.268	0.256	0.236	0.413	C+0.197	C+0.787	0.315±0.059
VL-400	15.157-16.142	14.173	0.256	0.236	0.413	C+0.197	C+0.787	0.315±0.059
VL-425	16.142-17.323	15.039	0.256	0.236	0.413	C+0.197	C+0.787	0.315±0.059
VL-450	17.323-18.898	15.945	0.256	0.236	0.413	C+0.197	C+0.787	0.315±0.059
VL-500	18.898-20.866	17.717	0.256	0.236	0.413	C+0.197	C+0.787	0.315±0.059
VL-525	20.079-21.260	18.583	0.256	0.236	0.413	C+0.197	C+0.787	0.315±0.059
VL-550	20.866-22.835	19.488	0.256	0.236	0.413	C+0.197	C+0.787	0.315±0.059
VL-600	22.835-24.803	21.260	0.256	0.236	0.413	C+0.197	C+0.787	0.315±0.059



VS Standard Size

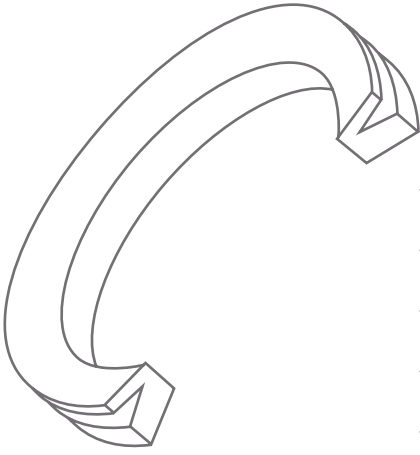
SIZE NUMBERS	d1	d	c	A	B	d2	d3	B1
VS-005	4.5 - 5.5	4.0	2.0	3.9	5.2	d1+1	d1+6	4.5 ± 0.4
VS-006	5.5 - 6.5	5.0	2.0	3.9	5.2	d1+1	d1+6	4.5 ± 0.4
VS-007	6.5 - 8.0	6.0	2.0	3.9	5.2	d1+1	d1+6	4.5 ± 0.4
VS-008	8.0 - 9.5	7.0	2.0	3.9	5.2	d1+1	d1+6	4.5 ± 0.4
VS-010	9.5 - 11.5	9.0	3.0	5.6	7.7	d1+2	d1+9	6.7 ± 0.6
VS-012	11.5 - 13.5	10.5	3.0	5.6	7.7	d1+2	d1+9	6.7 ± 0.6
VS-014	13.5 - 15.5	12.5	3.0	5.6	7.7	d1+2	d1+9	6.7 ± 0.6
VS-016	15.5 - 17.5	14.0	3.0	5.6	7.7	d1+2	d1+9	6.7 ± 0.6
VS-018	17.5 - 19.0	16.0	3.0	5.6	7.7	d1+2	d1+9	6.7 ± 0.6
VS-020	19.0 - 21.0	18.0	4.0	7.9	10.5	d1+2	d1+12	9.0 ± 0.8
VS-022	21.0 - 24.0	20.0	4.0	7.9	10.5	d1+2	d1+12	9.0 ± 0.8
VS-025	24.0 - 27.0	22.0	4.0	7.9	10.5	d1+2	d1+12	9.0 ± 0.8
VS-028	27.0 - 29.0	25.0	4.0	7.9	10.5	d1+3	d1+12	9.0 ± 0.8
VS-030	29.0 - 31.0	27.0	4.0	7.9	10.5	d1+3	d1+12	9.0 ± 0.8
VS-032	31.0 - 33.0	29.0	4.0	7.9	10.5	d1+3	d1+12	9.0 ± 0.8
VS-035	33.0 - 36.0	31.0	4.0	7.9	10.5	d1+3	d1+12	9.0 ± 0.8
VS-038	36.0 - 38.0	34.0	4.0	7.9	10.5	d1+3	d1+12	9.0 ± 0.8
VS-040	38.0 - 43.0	36.0	5.0	9.5	13.0	d1+3	d1+15	11.0 ± 1.0
VS-045	43.0 - 48.0	40.0	5.0	9.5	13.0	d1+3	d1+15	11.0 ± 1.0
VS-050	48.0 - 53.0	45.0	5.0	9.5	13.0	d1+3	d1+15	11.0 ± 1.0
VS-055	53.0 - 58.0	49.0	5.0	9.5	13.0	d1+3	d1+15	11.0 ± 1.0
VS-060	58.0 - 63.0	54.0	5.0	9.5	13.0	d1+3	d1+15	11.0 ± 1.0
VS-065	63.0 - 68.0	58.0	5.0	9.5	13.0	d1+3	d1+15	11.0 ± 1.0
VS-070	68.0 - 73.0	63.0	6.0	11.3	15.5	d1+4	d1+18	13.5 ± 1.2
VS-075	73.0 - 78.0	67.0	6.0	11.3	15.5	d1+4	d1+18	13.5 ± 1.2
VS-080	78.0 - 83.0	72.0	6.0	11.3	15.5	d1+4	d1+18	13.5 ± 1.2
VS-085	83.0 - 88.0	76.0	6.0	11.3	15.5	d1+4	d1+18	13.5 ± 1.2
VS-090	88.0 - 93.0	81.0	6.0	11.3	15.5	d1+4	d1+18	13.5 ± 1.2
VS-095	93.0 - 98.0	85.0	6.0	11.3	15.5	d1+4	d1+18	13.5 ± 1.2
VS-100	98.0 - 105.0	90.0	6.0	11.3	15.5	d1+4	d1+18	13.5 ± 1.2
VS-110	105.0 - 115.0	99.0	7.0	13.1	18.0	d1+4	d1+21	15.5 ± 1.5
VS-120	115.0 - 125.0	108.0	7.0	13.1	18.0	d1+4	d1+21	15.5 ± 1.5
VS-130	125.0 - 135.0	117.0	7.0	13.1	18.0	d1+4	d1+21	15.5 ± 1.5
VS-140	135.0 - 145.0	126.0	7.0	13.1	18.0	d1+4	d1+21	15.5 ± 1.5
VS-150	145.0 - 155.0	135.0	7.0	13.1	18.0	d1+4	d1+21	15.5 ± 1.5
VS-160	155.0 - 165.0	144.0	8.0	15.0	20.5	d1+5	d1+24	18.0 ± 1.8
VS-170	165.0 - 175.0	153.0	8.0	15.0	20.5	d1+5	d1+24	18.0 ± 1.8
VS-180	175.0 - 185.0	162.0	8.0	15.0	20.5	d1+5	d1+24	18.0 ± 1.8
VS-190	185.0 - 195.0	171.0	8.0	15.0	20.5	d1+5	d1+24	18.0 ± 1.8
VS-199	195.0 - 210.0	180.0	8.0	15.0	20.5	d1+5	d1+24	18.0 ± 1.8

V-Seal Standard Size

VS Standard Size

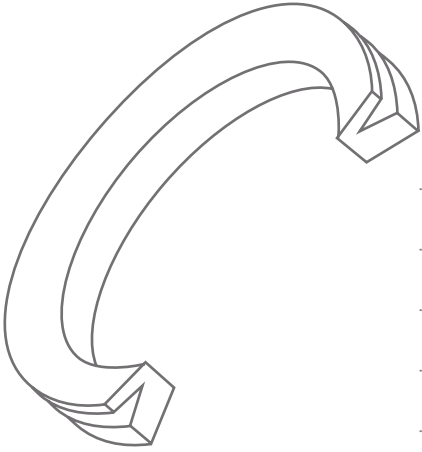
SIZE NUMBERS	d1	d	c	A	B	d2	d3	B1
VS-005	0.177-0.217	0.157	0.079	0.154	0.205	d1+0.039	d1+0.236	0.177±0.016
VS-006	0.217-0.256	0.197	0.079	0.154	0.205	d1+0.039	d1+0.236	0.177±0.016
VS-007	0.256-0.315	0.236	0.079	0.154	0.205	d1+0.039	d1+0.236	0.177±0.016
VS-008	0.315-0.374	0.276	0.079	0.154	0.205	d1+0.039	d1+0.236	0.177±0.016
VS-010	0.374-0.453	0.354	0.118	0.220	0.303	d1+0.079	d1+0.354	0.264±0.024
VS-012	0.453-0.531	0.413	0.118	0.220	0.303	d1+0.079	d1+0.354	0.264±0.024
VS-014	0.531-0.610	0.492	0.118	0.220	0.303	d1+0.079	d1+0.354	0.264±0.024
VS-016	0.610-0.689	0.551	0.118	0.220	0.303	d1+0.079	d1+0.354	0.264±0.024
VS-018	0.689-0.748	0.630	0.118	0.220	0.303	d1+0.079	d1+0.354	0.264±0.024
VS-020	0.748-0.827	0.709	0.157	0.311	0.413	d1+0.079	d1+0.472	0.354±0.031
VS-022	0.827-0.945	0.787	0.157	0.311	0.413	d1+0.079	d1+0.472	0.354±0.031
VS-025	0.945-1.063	0.866	0.157	0.311	0.413	d1+0.079	d1+0.472	0.354±0.031
VS-028	1.063-1.142	0.984	0.157	0.311	0.413	d1+0.118	d1+0.472	0.354±0.031
VS-030	1.142-1.220	1.063	0.157	0.311	0.413	d1+0.118	d1+0.472	0.354±0.031
VS-032	1.220-1.299	1.142	0.157	0.311	0.413	d1+0.118	d1+0.472	0.354±0.031
VS-035	1.299-1.417	1.220	0.157	0.311	0.413	d1+0.118	d1+0.472	0.354±0.031
VS-038	1.417-1.496	1.339	0.157	0.311	0.413	d1+0.118	d1+0.472	0.354±0.031
VS-040	1.496-1.693	1.417	0.197	0.374	0.512	d1+0.118	d1+0.591	0.433±0.039
VS-045	1.693-1.890	1.575	0.197	0.374	0.512	d1+0.118	d1+0.591	0.433±0.039
VS-050	1.890-2.087	1.772	0.197	0.374	0.512	d1+0.118	d1+0.591	0.433±0.039
VS-055	2.087-2.283	1.929	0.197	0.374	0.512	d1+0.118	d1+0.591	0.433±0.039
VS-060	2.283-2.480	2.126	0.197	0.374	0.512	d1+0.118	d1+0.591	0.433±0.039
VS-065	2.480-2.677	2.283	0.197	0.374	0.512	d1+0.118	d1+0.591	0.433±0.039
VS-070	2.677-2.874	2.480	0.236	0.445	0.610	d1+0.157	d1+0.709	0.531±0.047
VS-075	2.874-3.071	2.638	0.236	0.445	0.610	d1+0.157	d1+0.709	0.531±0.047
VS-080	3.071-3.268	2.835	0.236	0.445	0.610	d1+0.157	d1+0.709	0.531±0.047
VS-085	3.268-3.465	2.992	0.236	0.445	0.610	d1+0.157	d1+0.709	0.531±0.047
VS-090	3.465-3.661	3.189	0.236	0.445	0.610	d1+0.157	d1+0.709	0.531±0.047
VS-095	3.661-3.858	3.346	0.236	0.445	0.610	d1+0.157	d1+0.709	0.531±0.047
VS-100	3.858-4.134	3.543	0.236	0.445	0.610	d1+0.157	d1+0.709	0.531±0.047
VS-110	4.134-4.528	3.898	0.276	0.516	0.709	d1+0.157	d1+0.827	0.610±0.059
VS-120	4.528-4.921	4.252	0.276	0.516	0.709	d1+0.157	d1+0.827	0.610±0.059
VS-130	4.921-5.315	4.606	0.276	0.516	0.709	d1+0.157	d1+0.827	0.610±0.059
VS-140	5.315-5.709	4.961	0.276	0.516	0.709	d1+0.157	d1+0.827	0.610±0.059
VS-150	5.709-6.102	5.315	0.276	0.516	0.709	d1+0.157	d1+0.827	0.610±0.059
VS-160	6.102-6.496	5.669	0.315	0.591	0.807	d1+0.197	d1+0.945	0.709±0.071
VS-170	6.496-6.890	6.024	0.315	0.591	0.807	d1+0.197	d1+0.945	0.709±0.071
VS-180	6.890-7.283	6.378	0.315	0.591	0.807	d1+0.197	d1+0.945	0.709±0.071
VS-190	7.283-7.677	6.732	0.315	0.591	0.807	d1+0.197	d1+0.945	0.709±0.071
VS-199	7.677-8.268	7.087	0.315	0.591	0.807	d1+0.197	d1+0.945	0.709±0.071

MEMO



A series of horizontal dotted lines for writing, starting from the top right and extending across the page.

MEMO



A series of horizontal dotted lines for writing, starting from the top right and extending across the page.

O-Ring Master

GMORS O-Ring Master provides international standard size lookup for rubber sealing rings. With this APP, you can operate it without an internet connection. In addition to O-rings, you can also find the size of X-rings and reinforcement rings (back-up rings). You can also search for the appropriate O-ring based on the groove size of the installed cylinder.

Material Master

GMORS Material Master provides material recommendations based on the application environment of your rubber seal products, such as "temperature" and "media". We provide nearly a thousand types of media to compare the compatibility of materials.



Android



iOS



Android



iOS



GMORS®

Seals to your heart

GMORS Taiwan (Headquarters)

No. 15, Kung Yeh East 4th Rd.,
Lukang, Chang Hua 505, Taiwan.
T : +886-47810288(REP.)
E : Inquiry@gmors.com

GMORS Thailand

700/889 Moo.3 Amata City Chonburi
Industrial Estate T. Nong Kakha A.
Pantong Chonburi 20160 Thailand
T : +66-38185399
E : Inquiry@gmors.co.th

GMORS Korea

1018, Galmachi-ro 314,
Jungwon-gu, Seongnam-si,
Gyeonggi-do, Republic of Korea
T : +82-316396606
E : Inquiry@gmors.co.kr

GMORS Japan

1 Chome-11-14 Honjo, Sumida City,
Tokyo 130-0004 Japan
T : +81-368032026
E : Inquiry@gmors.co.jp

GMORS Vietnam

GD4-1 in Ngoc Hoi Industrial Park,
Thanh Tri district - Hanoi city.
T : +84-02439339018
E : Inquiry@gmors.com.vn

GMORS Colombia

AK 68 #17-28, Bogota DC,
Colombia
T : + 57-3005646267
E : Inquiry@gmors.com.co

GMORS India

Unit No. 12-14 Indialand-Global
Industrial Park, Hinjawadi Phase1,
Pune - 411057, India.
T : +91-2067994400
E : Inquiry@gmors.co.in

GMORS Philippines

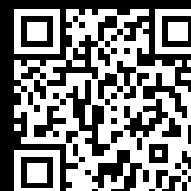
T : +63-9175501823
E : Inquiry@gmors.com.ph

GMORS Singapore

196, Pandan Loop #04-09
Pantech Business Hub,
Singapore 128384
T : +65-63161223
E : Inquiry@gmors.com.sg

GMORS Indonesia

Kompleks Pergudangan &
Perindustrian Era Prima Jln. Daan
Mogot KM21 No.1, Blok D11 Batu
Ceper – Tangerang, 15122
T : +62-2129518725
E : Inquiry@gmors.co.id



Catalog Download